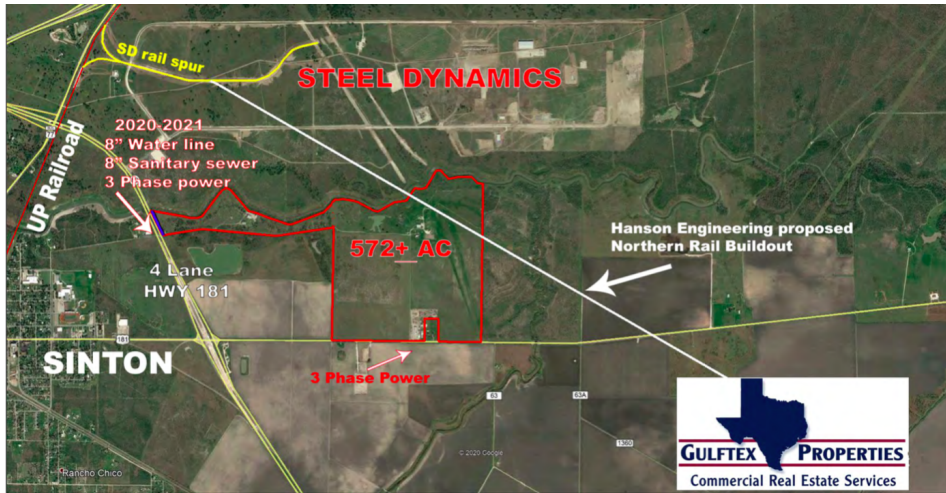


AVAILABLE VACANT LAND SITE

HIGHWAY 188 SITE
11478 HIGHWAY 188
SINTON , SAN PATRICIO COUNTY , TEXAS 78390



Corpus Christi
REGIONAL ECONOMIC
DEVELOPMENT CORPORATION



Description

572 acres along Highway 188 near the current Steel Dynamics electric arc furnace facility under construction.

Sale / Lease

For Sale Yes
For Lease No

Zoning

Opportunity No

Broker Contact

Company GulfTex Properties
Name Wade Spent
Phone (361) 992 - 8700 Ext. 15
Email wade@gulftex.com

Site Details

Latitude 28.036159
Longitude -97.45898099
Available Acres 572
Total Acres 572
Current Land Use agriculture
Max. Contiguous Space 572
Min. Subdivide (acres) no
Additional Acreage Available 572



Why the Coastal Bend

#1 Exporter of U.S. produced crude oil in the nation

3 Class 1 Railroads

6th Largest U.S. Port (tonnage)

#6 Best City to Start a Career Wallet Hub

#14 Most Popular locations for Millennials to purchase homes

#19 Best City for Families Wallet Hub

Top 20 Least Expensive cities for cost of doing business in the Western U.S.

FOR MORE INFORMATION ON BUSINESS LOCATION ASSISTANCE, CONTACT:

Corpus Christi Regional Economic Development Corporation
Mike Culbertson
P: (361) 882 - 7448
C:
E: mculbertson@ccredc.com

800 N. Shoreline Blvd.
Ste. 1300 South
Corpus Christi, Texas 78401