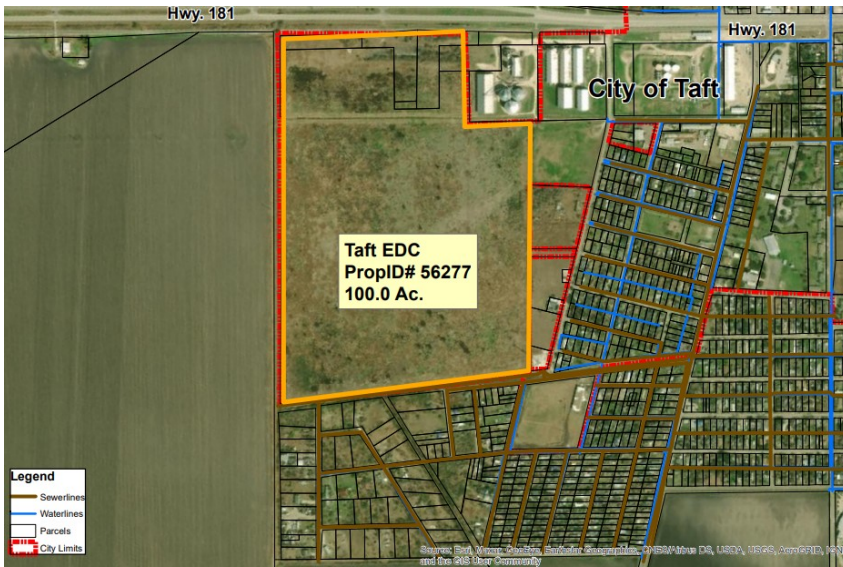


AVAILABLE VACANT LAND SITE

TAFT INDUSTRIAL SITE
HIGHWAY 181
TAFT, SAN PATRICIO COUNTY, TX 78390



Corpus Christi
REGIONAL ECONOMIC
DEVELOPMENT CORPORATION



Description

100 acre City-owned industrial site with Union Pacific rail cutting into the property on northern part of site.

Sale / Lease

For Sale No
For Lease No

Zoning

Opportunity No

Additional Contact

Organization San Patricio EDC
Name Adam Garawecki
Phone 361-704-3070
Title President/CEO

Broker Contact

Name no broker

Site Details

Latitude 27.96118003
Longitude -97.36441987
Available Acres 100
Total Acres 100
Current Land Use agricultural
Comments City officials will negotiate price of the site dependent on jobs and investment



Why the Coastal Bend

#1 Exporter of U.S. produced crude oil in the nation

3 Class 1 Railroads

6th Largest U.S. Port (tonnage)

#6 Best City to Start a Career Wallet Hub

#14 Most Popular locations for Millennials to purchase homes

#19 Best City for Families Wallet Hub

Top 20 Least Expensive cities for cost of doing business in the Western U.S.

FOR MORE INFORMATION ON BUSINESS LOCATION ASSISTANCE, CONTACT:

Corpus Christi Regional Economic Development Corporation
Mike Culbertson
P: (361) 882 - 7448
C:
E: mculbertson@ccredc.com

800 N. Shoreline Blvd.
Ste. 1300 South
Corpus Christi, Texas 78401